



# Fittings



# Fittings Manufactured from ASTM A-403 Stainless Steel

## PRODUCT DESCRIPTION



Patent Pending

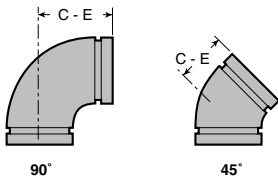
Victaulic offers roll grooved Schedule 10S Type 316L stainless steel fittings manufactured from products conforming to ASTM A-403 in sizes up to 323,9 mm. Fittings are optionally available in Schedule 5S and Schedule 40S. Configurations include elbows, tees, reducing tees and concentric reducers. Cast stainless steel caps are also available.

Other sizes, schedules and configurations are available upon request. Contact Victaulic Europe for details.

**Victaulic stainless steel fitting pressure ratings are equivalent to the pressure ratings of the coupling when installed on Schedule 10S (or Schedule 5S) stainless steel pipe.**

## DIMENSIONS

### Elbows

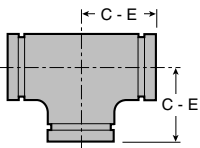


O.D. [mm]	90° Elbow - No. 410		45° Elbow - No. 411	
	C - E [mm]	Approx. Weight Each [kg]	C - E [mm]	Approx. Weight Each [kg]
60,3 (c)	83	0,5	51	0,3
73,0 (c)	127	1,0	71	0,4
76,1 (c)	95	1,1	57	0,9
88,9	114	1,2	51	0,6
114,3	152	2,0	64	1,0
139,7	191	+	79	+
141,3	191	+	83	+
168,3	229	5,0	95	2,5
219,1	305	9,6	127	5,0
273,0	381	16,6	159	8,4
323,9	457	25,8	191	12,9

(c) Cast fittings, type 316 (CF8M) stainless steel.

+ Contact Victaulic Europe for details.

### Tees

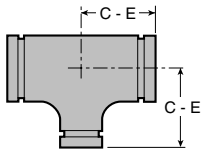


O.D. [mm]	Tee - No. 420	
	C - E [mm]	Approx. Weight Each [kg]
60,3 (c)	83	0,6
73,0 (c)	78	1,0
76,1 (c)	95	2,1
88,9	96	1,4
114,3	114	2,2
139,7	134	+
141,3	124	+
168,3	150	5,3
219,1	198	9,2
273,0	226	15,6
323,9	264	23,8

(c) Cast fittings, type 316 (CF8M) stainless steel.

+ Contact Victaulic Europe for details.

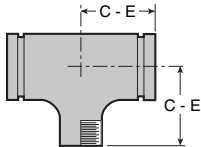
**Reducing Tees**



O.D. - [mm]		Reducing Tee - No. 425		
Run	Branch	C - E Run [mm]	C - E Branch [mm]	Approx. Weight Each [kg]
73,0	60,3 (c)	78	78	1,1
76,1	60,3 (c)	95	95	+
88,9	60,3	96	82	+
	73,0	96	82	1,4
	76,1	96	82	1,4
114,3	60,3	114	97	+
	73,0	114	97	+
	76,1	114	97	+
	88,9	114	99	2,2
139,7	88,9	134	111	+
	114,3	134	117	+
168,3	114,3	150	130	4,3
219,1	168,3	198	168	8,4
273,0	168,3	226	196	12,8
	219,1	226	218	14,2
323,9	219,1	264	242	18,2
	273,0	264	251	21,6

(c) Cast fittings, type 316 (CF8M) stainless steel.

**Reducing Tees with Female Threaded Outlet No. 29Ti**

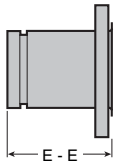


O.D.		Reducing Tee with Female Threaded Outlet - No. 29Ti *			
Run [mm]	Branch [Inches]	Wall Thickness	C - E Run [mm]	C - E Branch [mm]	Approx. Weight Each [kg]
60,3	1 1/2	2,0	105	83	+
76,1	1	2,0	105	86	+
	2	2,0	105	99	+
88,9	1	2,3	105	92	+
	2	2,3	105	106	+
114,3	1	2,3	105	105	+
	2	2,3	105	118	+

\* Manufactured from stainless steel type 316Ti

+ Contact Victaulic Europe for details.

**Flanged Adapter Nipples No. 441N**



O.D. [mm]	Flanged Adapter Nipple - No. 441N †		
	Length E - E [mm]	Nominal Pressure†	Approx. Weight Each [kg]
60,3	64	PN 10/16	+
76,1	64	PN 10/16	+
88,9	64	PN 10/16	+
114,3	76	PN 10/16	+
139,7	76	PN 10/16	+
141,3*	76	-	+
168,3	89	PN 10/16	+
219,1*	102	PN 10 or PN 16‡	+
273,0*	127	PN 10 or PN 16‡	+
323,9*	152	PN 10 or PN 16‡	+

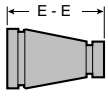
‡ All sizes listed except 141,3 mm are supplied with an aluminum flange according to DIN 2642 PN 10/16 type C. Roll grooved nipples are ANSI B16.9 stub end 316L (1.4404) Schedule 10S, except for sizes 76,1 and 139,7 mm, which have a pressed collar NF E 29251 with welded nipple 316L (1.4404).

† Pressure ratings listed are for flanged end. Pressure ratings on grooved end depend on coupling type installed. Contact Victaulic Europe for details.

‡ PN 10 and PN 16 are different products; specify clearly on order.

\* These sizes are also available as an aluminum ANSI B16.5 150 lbs lap joint flange with ANSI B16.9 stub end 316L (1.4404) Schedule 10S roll grooved nipple.

**Concentric Reducers  
No. 450**



O.D. - [mm]		Concentric Reducer - No. 450	
Large End	Small End	E - E [mm]	Approx. Weight Each [kg]
73,0	60,3 (c)	127	0,5
76,1	60,3 (c)	64	+
88,9	60,3	127	+
	73,0	127	0,7
	76,1	127	+
114,3	60,3	127	+
	73,0	127	+
	76,1	127	+
	88,9	127	0,9
139,7	88,9	127	+
	114,3	127	+
168,3	114,3	140	1,8
	139,7	140	1,9
219,1	139,7	152	2,4
	168,3	152	3,2
273,0	168,3	178	4,0
	219,1	178	5,2
323,9	219,1	203	6,0
	273,0	203	7,7

(c) Cast fittings, type 316 (CF8M) stainless steel.

**End Caps No. 460 with or  
without Eccentric Threaded  
Hole**

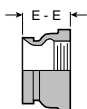


O.D. [mm]	Threaded Hole Size [inches]	End Cap - No. 460	
		Thickness T [mm]	Approx. Weight Each [kg]
60,3	1 1/4 †	24	+
76,1	2 †	27	+
88,9	2	26	0,5
114,3	2	31	0,7
139,7	1 1/2 †	36	+
	2	36	+
168,3	1 1/2 †	45	1,8
	2	45	1,8
219,1	1 1/2 †	57	3,0
273,0	2 1/2 †	69	+
323,9	2 1/2 †	83	+

(c) Cast fittings, type 316 (CF8M) stainless steel.

† Threaded holes can be made concentric only. Other sizes are supplied with eccentric hole.

**Female Threaded Adapter  
Nipples No. 480**



O.D.		Female Threaded Adapter Nipple - No. 480	
Grooved End [mm]	Female Threaded (BSP) End [inches]	Length E - E [mm]	Approx. Weight Each [kg]
60,3	2	70	+
76,1	2 1/2	70	+

NOTE: nipples are manufactured from Schedule 40S stainless steel type 316L (1.4404).

+ Contact Victaulic Europe for details.



## MATERIAL SPECIFICATIONS

**Elbows, Tees and Reducers** • Type 316L stainless steel. Made from products conforming to ASTM A-403.

• **Optional:** Schedule 5S and Schedule 40S.

**Caps and cast fittings** • Type 316 stainless steel, conforming to ASTM A-351, A-743 and A-744, Grade CF8M.